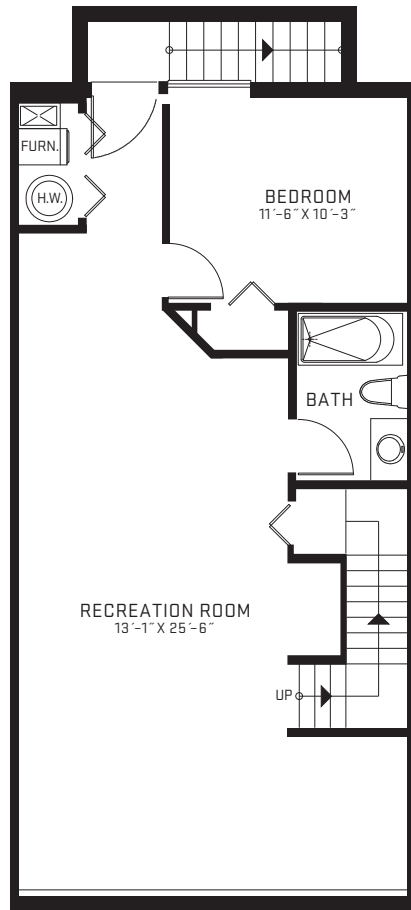


Langley
PARKSIDE

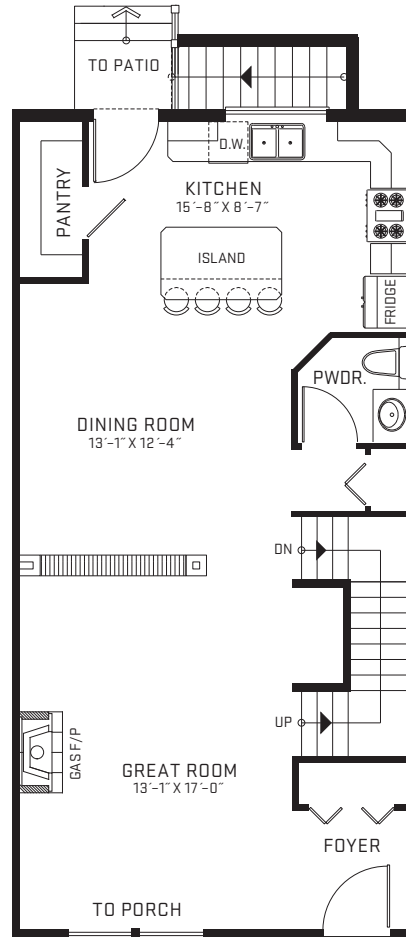
 NORTH YORKSON

BIRCH

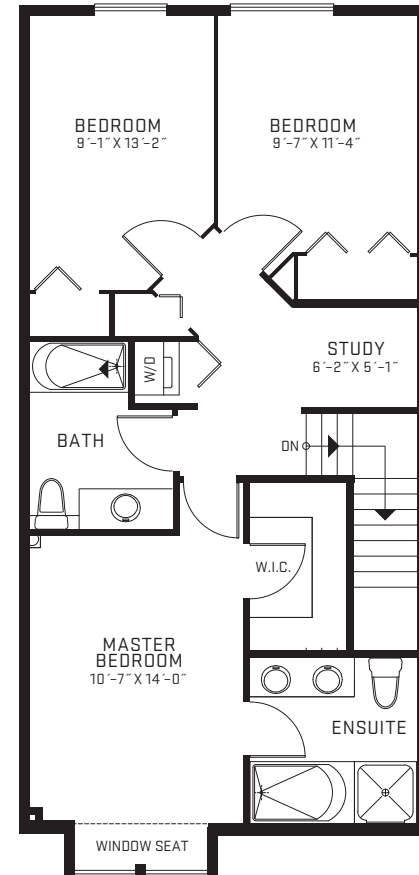
2,377 SQFT | 4 BEDROOM | 3.5 BATH



787 SQFT
 LOWER



787 SQFT
 MAIN



803 SQFT
 UPPER

Infinity Properties reserves the right to make modifications and changes to the building design, elevations, dimensions, specifications, features and prices, without prior notification. Decks, patios, stairs and windows may vary based on site conditions. All sizes and dimensions are approximate and based on Architectural measurements. Reverse plans occur throughout the development. See the Sales Representative for details. E. & O.E.